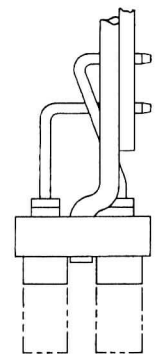
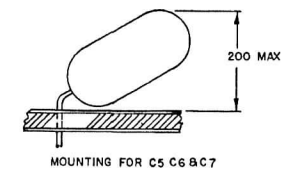
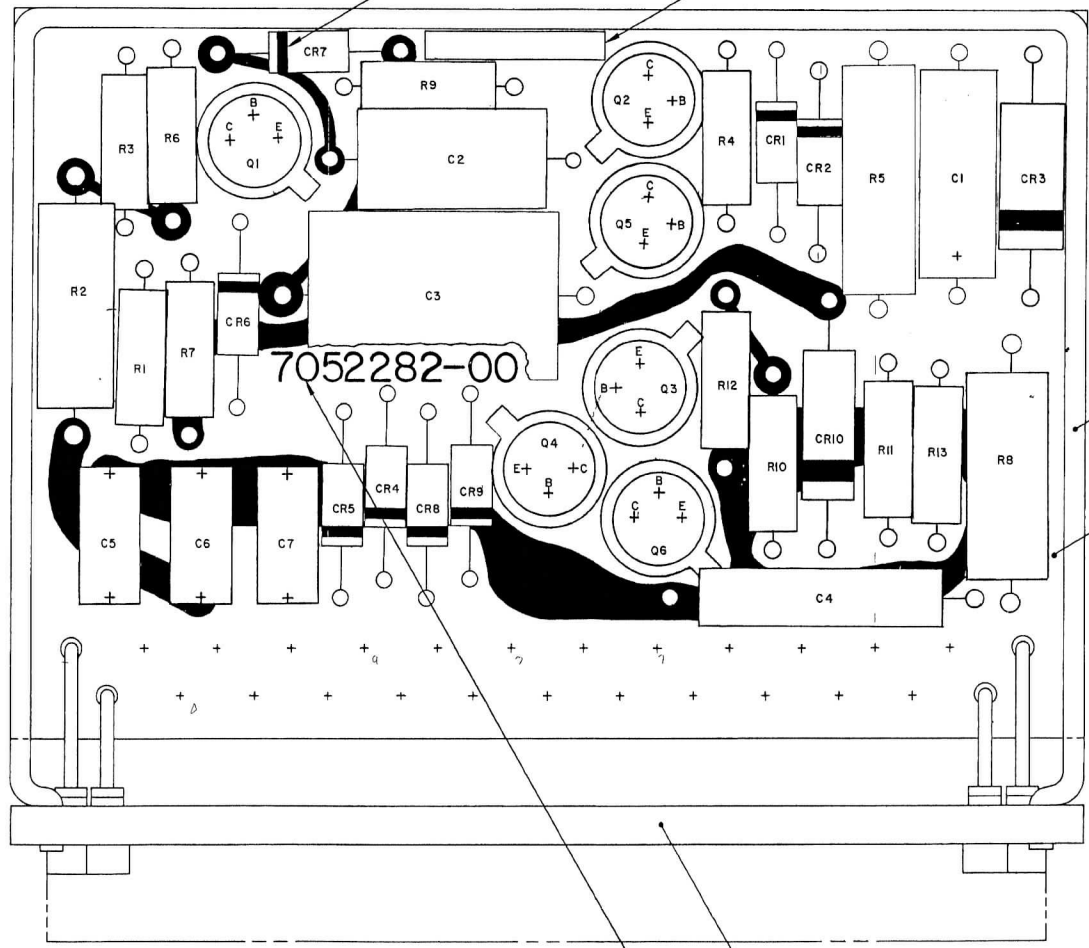


REVISIONS						
ZONE	LTR	EIR	DESCRIPTION - FOR DETAILS SEE EIR	CHK	DATE	APPROVED
A		79288	REVISED PER EIR		8/63	<i>[Signature]</i>
B		11330	SEE EIR		11-63	<i>[Signature]</i>



- NOTE
- 1 THIS ASSEMBLY TO BE MANUFACTURED PER APPLICABLE PORTIONS OF GD
 - 2 FIND NUMBERS FOR PARTS IDENTIFIED BY REFERENCE DESIGNATIONS APPEAR IN L/M ONLY
 - 3 ASSEMBLY NUMBER TO BE 06 HIGH MINIMUM AND LOCATED APPROXIMATELY AS SHOWN WITH APPLICATION PER GD
 - 4 REFERENCE DESIGNATIONS ARE ABBREVIATED. PREFIX THE DESIGNATION WITH THE UNIT NUMBER OR ASSEMBLY DESIGNATION OR BOTH
 - 5 EPOXY DIP PER (32)
 - 6 BANDED END INDICATES CATHODE

DRAWING UNDER
OF CONTROL

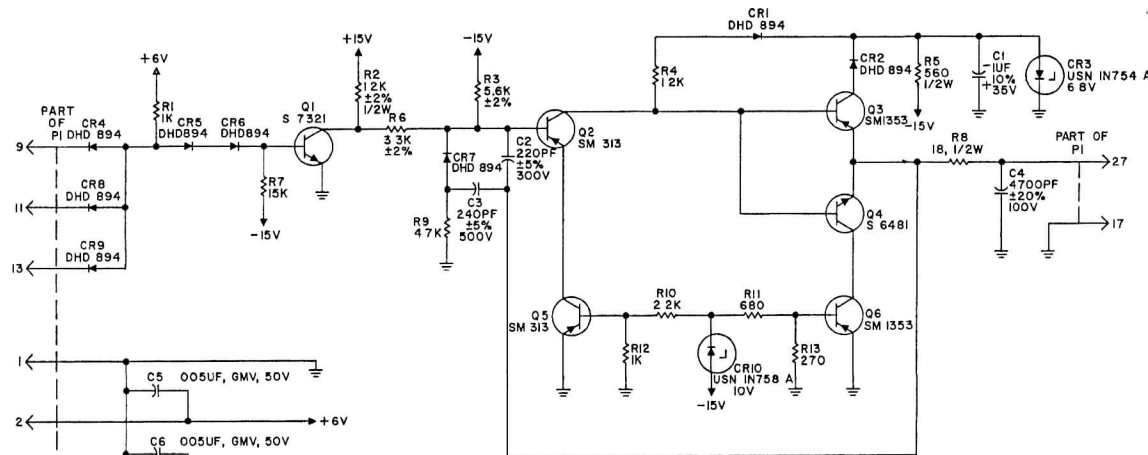
PART NO 7052282-00
IDENT NO

FOR MATL REQUIREMENTS SEE L/M
L/M REV LETTER CONTROLS DOCUMENT

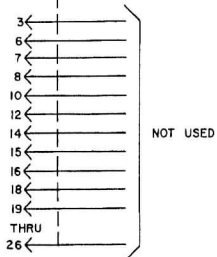
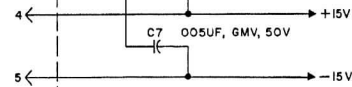
B	LTR	SHEET	UNLESS OTHERWISE SPECIFIED DIMENSIONS IN INCHES TOL ON 2 PLACE DECIMALS 3 PLACE ANGLES	LAYOUT	DATE	CLASS	UNIVAC DIVISION OF BERRY RAND CORPORATION
2	1	INDCX		DRAFTSMAN J MASSEY CHECKER	2666	D	
HOLE DIA TOL 0 THRU .251 THRU .501 AND LARGER + .003 + .005 + .010 - .002 - .003 - .005 THREADS EXT CL 2A INT CL 2B COMMODITY CODE 7440				ENGINEER O H LARSEN APPROVAL <i>[Signature]</i>	9/2/63 1/2		TITLE DRIVER, CONTROL LINE (-) 6 VOLTS
SIZE NO D 90536						DWG NO 7052282	
SCALE 8/1						WEIGHT	SHEET 1 OF

DWG NO 7052282

REVISIONS						
ZONE	LTN	EIR	DESCRIPTION - FOR DETAILS SEE EIR	CHK	DATE	APPROVED
C-4	A	79288	ADDED POLARITY TO CI		7/25/61	<i>[Signature]</i>
	B	11330	SEE EIR		11-20-61	<i>[Signature]</i>



NOTE
1 UNLESS OTHERWISE SPECIFIED
RESISTORS OHMS, ±5%, 1/4W



DRAWING UNDER
EIR CONTROL

PART NO. 7052281-00
IDENT NO.

FOR MATL REQUIREMENTS SEE L/M.
L/M REV LETTER CONTROLS DOCUMENT

UNLESS OTHERWISE SPECIFIED DIMENSIONS IN INCHES TOL ON 2 PLACE 3 PLACE ANGLES DECIMALS DECIMALS	LAYOUT	DATE	CLASS	UNIVAC DEFENSE SYSTEMS DIVISION <small>(MEMBER OF BORG-WARNE CORPORATION) UNIVAC PARK AT PAUL MOUNT 88118</small>
	DRAFTSMAN G STOLL	2/1/66	D	
+	CHECKER			TITLE DRIVER, CONTROL LINE (-)6 VOLTS
0 THRU 250 + 003 + 005 + 010 - 003 - 005 - 005	ENGINEER O H LARSEN			SIZE D
THREAS EXT CL 2A, INT CL 2B	APPROVAL <i>[Signature]</i>			NO 90536
COM/MODIFY CODE				DWG NO 7052282
				SCALE WEIGHT
				SHEET 2 OF

DO NOT SCALE THIS PRINT

A B

FIND NO.	APPL DASHES	QTY REQD	UM	CAGE CODE	PART OR DOCUMENT IDENTIFYING NO.	SPCL ITEM	DESCRIPTION	REMARKS	REFERENCE DESIGNATIONS
1	ALL	1	EA	90536	7052281-00		PRINTED CIRCUIT BOARD-- CONTROL LINE DRIVER, (-)6 VOLT		
2	ALL	1	EA	90536	4230004-00		STIFFENER, CIRCUIT BOARD		
3	ALL	1	EA	90536	4230017-01		SPACER, PRINTED CIRCUIT ASSY		
4	ALL	1	EA	90536	906378-09	VID	CAPACITOR, FIXED, CERAMIC DIELECTRIC--100 VOLT, 4700 PF, +-20%		C4
5	ALL	1	EA	81349	CS13BF105K		CAPACITOR, FIXED, ELECTROLYTIC--SUPERSEDED		C1
6	ALL	2	EA	90536	4908000-00	VID	TRANSISTOR - PNP, GERMANIUM, SWITCHING, 150 MW, -15 V		Q2 Q5
7	ALL	1	EA	81349	RC07GF271J		RESISTOR, FIXED COMPOSITION 1/4 WATT, 270 OHM, +-5%		R13
8	ALL	1	EA	81349	RC07GF681J		RESISTOR, FIXED COMPOSITION 1/4 WATT, 680 OHM, +-5%		R11
9	ALL	2	EA	81349	RC07GF102J		RESISTOR, FIXED COMPOSITION 1/4 WATT, 1000 OHM, +-5%		R1 R12
10	ALL	1	EA	81349	RC07GF122J		RESISTOR, FIXED COMPOSITION 1/4 WATT, 1200 OHM, +-5%		R4
11	ALL	1	EA	81349	RC07GF222J		RESISTOR, FIXED COMPOSITION 1/4 WATT, 2200 OHM, +-5%		R10
12	ALL	1	EA	81349	RC07GF472J		RESISTOR, FIXED COMPOSITION 1/4 WATT, 4700 OHM, +-5%		R9
13	ALL	1	EA	81349	RC07GF153J		RESISTOR, FIXED COMPOSITION 1/4 WATT, 15000 OHM, +-5%		R7
14	ALL	1	EA	81349	RC20GF561J		RESISTOR, FIXED COMPOSITION 1/2 WATT, 560 OHM, +-5%		R5
15	ALL	1	EA	81349	RC20GF180J		RES FXD CMPSN		R8
16	ALL	1	EA	81349	CY10C221J		CAPACITOR, FIXED, GLASS DIELECTRIC--300 VOLT, 220 PF, +-5%		C2
17	ALL	1	EA	81349	CY15C241J		CAPACITOR, FIXED, GLASS DIELECTRIC--500 VOLT, 240 PF, +-5%		C3
18	ALL	1	EA	90536	7900038-00	SOC D ESD	TRANSISTOR-- NPN, SILICON, SWITCHING, 400 MW, 60 V		Q4
19	ALL	2	EA	90536	7900039-00	SOC D	TRANSISTOR-- PNP, SILICON, SWITCHING, 400 MW, 50 V, 500 MA		Q3 Q6
20	ALL	1	EA	81349	RL07S562G		RESISTOR, FIXED METAL FILM 1/4 WATT, 5600 OHM, +-2%		R3
21	ALL	1	EA	81349	RL20S122G		RES FXD FILM		R2
22	ALL	1	EA	81349	JAN1N754A	ESD	SEMICONDUCTOR DEVICE, DIODE-- SILICON, VR, 400 MW, 6.8 V		CR3

TITLE: DRIVER, CONTROL LINE--

(-) 6 VOLTS

FIND NO.	APPL DASHES	QTY REQD	UM	CAGE CODE	PART OR DOCUMENT IDENTIFYING NO.	SPCL ITEM	DESCRIPTION	REMARKS	REFERENCE DESIGNATIONS
23	ALL	1	EA	81349	JAN1N758A	ESD	SEMICONDUCTOR DEVICE, DIODE-- SILICON, VR, 400 MW, 10 V		CR10
24	ALL	1	EA	90536	7900531-00	SOCD	TRANSISTOR-- NPN, SILICON, SWITCHING, 360 MW, 40 V, 100 MA		Q1
25	ALL	1	EA	90536	7900622-00	SOCD	CONNECTOR, PLUG, ELECTRICAL-- MALE, 27 CONTACT, P.C. BOARD		P1
26	ALL	1	EA	81349	RL07S332G		RESISTOR, FIXED METAL FILM 1/4 WATT, 3300 OHM, +-2%		R6
27	ALL	8	EA	90536	7901126-00	SOCD ESD	SEMICONDUCTOR DEVICE, DIODE-- SILICON, SWITCHING, 250 MW, 40 V		CR1 CR2 CR4 CR5 CR6 CR7 CR8 CR9
28	ALL	3	EA	90536	7901464-00	SOCD	CAPACITOR, FXD, CER DIELECTRIC--DISC, 50 VOLT, .005UF GMV		C5 C6 C7
S01	ALL		REF	90536	DS04801		PRINTED-WIRING ASSEMBLIES, GENERAL SPECIFICATION FOR		
S02	ALL		REF	90536	DS04522		EPOXY COATING, PRINTED-WIRING ASSEMBLIES, APPLICATION OF		

SPCL ITEM:

CSI = CRITICAL SAFETY ITEM
 CSP = CRITICAL SAFETY PROCESS
 DEL = REMOVE NOTED QTY & DISPOSE OF
 ENI = ENVIRONMENTAL IMPACT ITEM
 ESD = ELECTROSTATIC DISCHARGE SENSITIVE DEVICE
 ESS = ENVIRONMENTAL STRESS SCREENING
 FE = FURNISHED EQUIPMENT (GFE, CFE, BFE..)
 HAZ = HAZARDOUS CONDITIONS, PROCESSES OR MATERIALS
 HCI = HARDNESS CRITICAL ITEM
 HCP = HARDNESS CRITICAL PROCESS

I/R = INTERCHANGEABILITY/REPLACEABILITY
 INT = INTERFACE CONTROL DRAWING
 MF = MAKE FROM
 OCI = OBSERVABLE CRITICAL ITEM
 OCP = OBSERVABLE CRITICAL PROCESS
 ODC = OZONE DEPLETING CHEMICAL
 R&R = REMOVE NOTED QTY & RETAIN FOR INSTALLATION
 RCD = REMOVE & RETAIN FOR CUSTOMER DISPOSITION
 SOCD = SOURCE CONTROL DRAWING
 VID = VENDOR ITEM DRAWING

LEGEND:

REFER TO CONTROL REVISION LIST (CRL) FOR REVISION HISTORY.
 AN APPL DASH OF "ALL" REPRESENTS A FIND NO. USED ON ALL ASSEMBLY CONFIGURATIONS (DASHES).
 A FIND NO. BEGINNING WITH "E" IDENTIFIES TOOLING AND IS FOR INTERNAL USE ONLY.
 A FIND NO. BEGINNING WITH "F" IDENTIFIES A FUNCTIONAL/SCHEMATIC DOCUMENT.
 A FIND NO. BEGINNING WITH "R" IDENTIFIES A REFERENCE DOCUMENT.
 A FIND NO. BEGINNING WITH "S" IDENTIFIES A SPECIFICATION/REQUIREMENT/ACCEPTANCE DOCUMENT OR SOFTWARE PROGRAM.
 A FIND NO. ENDING WITH AN ALPHA IDENTIFIES AN ALTERNATE ITEM.
 A FIND NO. LIKE "5xx" IDENTIFIES MATERIAL USED ON INSEPARABLE ITEMS.
 A NUMBER IN THE PART OR DOCUMENT IDENTIFYING NO. COLUMN WITH () REPRESENTS A REFERENCE ONLY PART NUMBER.
 [] INDICATES A REFERENCE OEM PART NUMBER, (see applicable Sources-of-Supply Document)